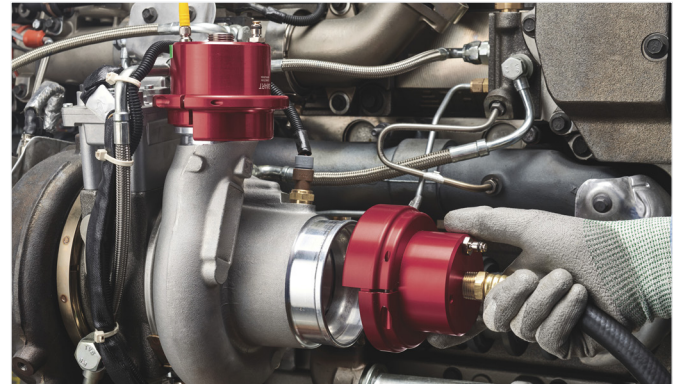


FEG / EXTERNAL SEALING CONNECTION TOOL

» Pneumatic sealing connection tool with gripping cradle for manual operated processes.

CONNECTS TO:



SPECIFICATIONS

Pressure Rating	Pilot Pressure	Operating Temperatures
Determined by Application Consult Factory	80psig min.	-40°F to +250°F (-40°C to +121°C)
Termination Port	Materials of Construction	Seal Material*
NPT (Determined by Application Consult Factory)	Anodized Aluminum, Stainless Steel, Potted PCA	Standard: FasTest Buna-N, FasTest Urethane Optional: FKM, Neoprene®, EPDM, FDA White Neoprene®

* Additional seal material types available, consult factory.
** Operating Temp: 32°F-100°F (0°C-38°C) for Intelligent Connection Technology.

ICON™ - INTELLIGENT CONNECTION TECHNOLOGY



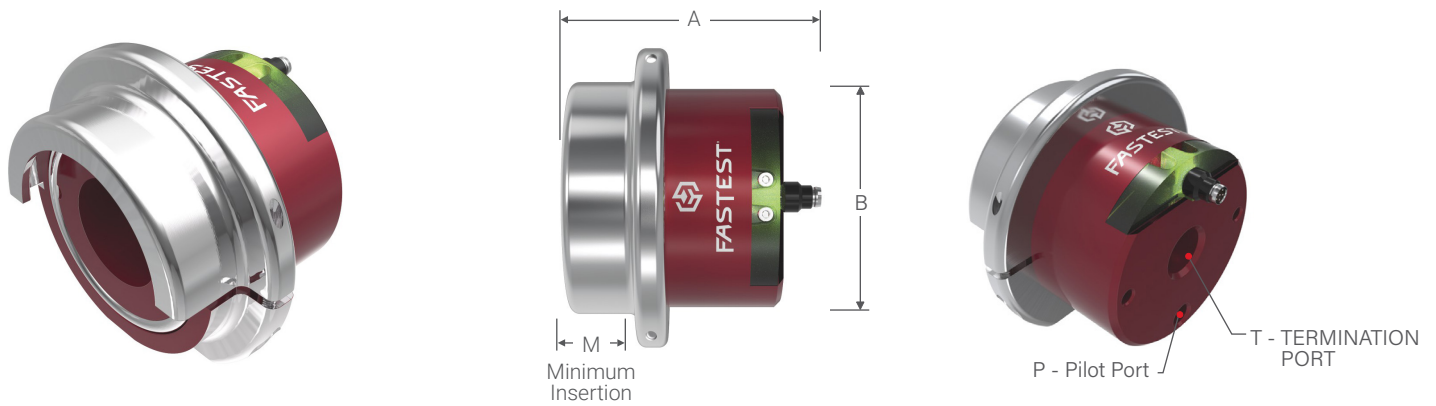
ACTUATION METHOD

Pneumatic: Pilot pressure creates uniform seal movement and consistent sealing force.

ACCESSORIES VISIT FASTESTINC.COM

- 1 Gripping cradle minimizes the need for fixturing
- 2 Improved safety by preventing the tool from accidental release under pressure
- 3 Consistent sealing force with pneumatic actuation
- 4 Optimized for operator-applied applications such as turbos and flanged ports
- 5 ICON™ capable - additional sensing capabilities and visual feedback

FEG / EXTERNAL SEALING CONNECTION TOOL



Ordering Information		Dimensions				
Sealing Range	Part Number	A	B	M	P	T
Determined by Application Consult Factory	Determined by Application Consult Factory	Determined by Application Consult Factory				

i Secondary safety measures are advisable when tools are under pressure to protect the operator.

HOW TO ORDER

Request A Quote
 Visit: www.fastestinc.com/en/applicationevaluation

Contact A FasTest Representative
 Email: fastsales@fastestinc.com



ICON™

INTELLIGENT CONNECTION TECHNOLOGY

FasTest's ICON™ adds sensing capabilities to our mechanical Sealing Connection Tools. ICON™ Tools include instant LED visual feedback and data output to improve sealing connection accuracy, maximize production efficiency, and optimize maintenance.



ICON™ features:



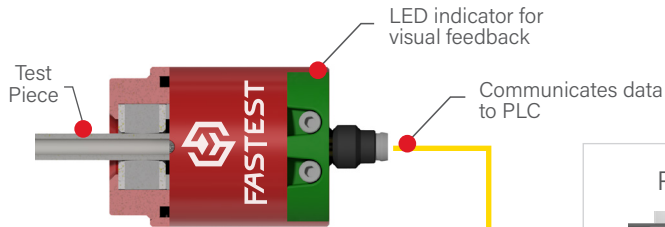
SURE SEAL™

Instant LED feedback verifies a good connection prior to starting a test.

System Overview:

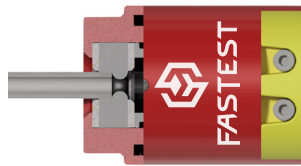
CONNECTED

Green indication of a good connection.



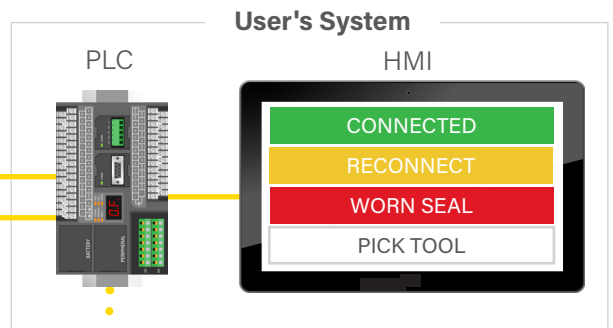
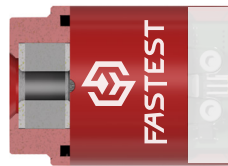
RECONNECT

Recognize a connection issue before causing a false failure.



PICK TOOL

Controllable LED signals operator to use specific tool.



Standalone install or tie into PLC

PROGRAMMING TOOL

- Quickly setup ICON™ Tools
- Eliminate the need for PLC programming
- » • Can be powered from wall adapter (included) or from a PLC (24VDC)